



MOZA GS steering wheel

Push it to the Limit



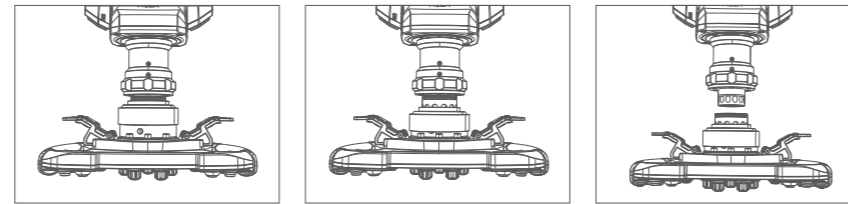
User manual 使用说明书

正面

01 Product introduction

- Alcantara from Italy
- 300mm standard size of GT wheel
- Forged carbon fiber framework and paddle
- Optical electromagnetic suction dual-clutch paddles
- RGB shift indicator
- Programmable luminous keys (9 colors) and knobs
- D1 racing level quick disassembly
- Wireless power supply and communication technology

02 Steps of quick release



- Match the position of the 6 steel balls on the female quick release head of the steering wheel to the 6 grooves on the quick release male head of the base
- Press the quick release to the direction of the panel
- Quick release will automatically return to the position and lock, if there is no return, you can try to rotate the panel slightly or remove it before installing
- If you need to remove the disk surface, pinch the golden part with both hands, and pull out the disk surface at the same time

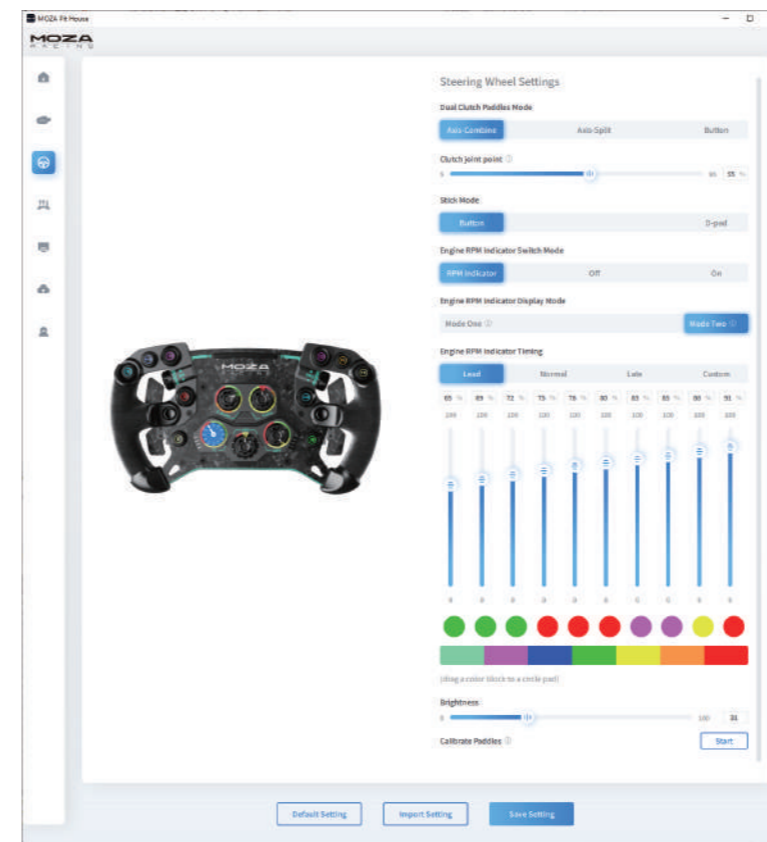
03 Steering wheel configuration

- The GS steering wheel can be set up conveniently and quickly in the MOZA Pit House software.
- Clutch paddle mode: clutch working mode setting, divided into synthetic shaft, independent shaft and button.
 - Clutch coupling point: adjust the dual clutch coupling point in synthetic shaft mode, the default is 50%, and the setting range is 5%~95%
 - Joystick mode: Set the joystick operation mode, which can be set as buttons and cross keys
 - Indicator switch mode: the indicator status is adjusted, divided into rotating with speed, off and always on
 - Indicator display mode: It is divided into mode 1 and mode 2, and a detailed explanation will pop up when the mouse is moved to the option
 - Speed prompt setting: According to the timing relationship between the speed and the shift indicator light, it is divided into advanced type, standard type, limit type and custom mode
 - Brightness adjustment: adjust the brightness of the shift indicator
 - Indicator color adjustment: drag the color block you like to the indicator to change the color

- Pickle calibration: when the pickup sensor is abnormal, click here to perform the paddle calibration

Enter the debugging mode through the quick release button, you can set the color of the illuminated button, the specific operation is as follows:
Press and hold the thumb knobs (BB and ERS) on the left and right at the same time until the gear shift indicator flashes, and then enter the button setting mode.
Each time you press the button, you can change a color, and there are 9 colors in total.

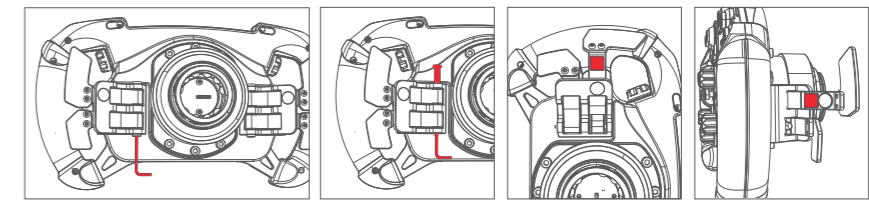
Press and hold the right dual-clutch paddle with your right hand, and at the same time move the left universal joystick left and right, you can quickly switch the screen UI interface



(for detailed steering wheel settings and functions, please visit the official website of MOZA Racing)

04 Installation of magnetic paddle mute pad

Place the steering wheel on a flat surface with the plate facing down, use a hexagonal wrench to remove the screw on the side of the shift paddle trigger lever, and then use the wrench to lift the latch from the side of the magnetic paddle (there is no need to push it out completely, only the magnetic paddle The trigger lever and the latch can be separated), and then stick the mute pad on the back of the magnet hole and the protruding position on the back of the trigger lever, as shown in the figure, and finally return the latch and replace the screw



05 comparison table of English abbreviations of keys and knobs

- | | |
|--|--|
| FL: automatic flashing light | WIP: wiper |
| Box: inbound instruction | R: Reverse gear |
| S1: custom button 1 | N: Neutral |
| S2: custom button 2 | E-brake: engine brake adjustment |
| PL: activate / deactivate speed limit in maintenance area | Turbo: turbine pressure regulation |
| Tr: Fleet communication | TC: traction control adjustment |
| BB: brake ratio adjustment | Abs: anti lock control and adjustment |
| Ers: energy recovery regulation | Diff: differential adjustment |
| P: Park gear | |

06 Packing list

- GT steering wheel
- tool kit: Hexagon screwdriver / Mute pad X4
- Portable cloth bag

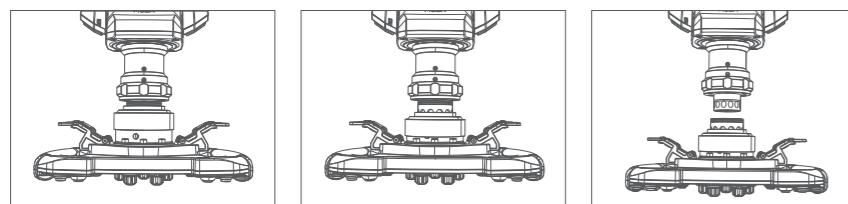
07 Product parameters

- | | |
|---|--|
| Ring body coating material: Alcantara from Italy | LED color: 7 colors customized |
| Frame material: forged carbon fiber | Intelligent telemetry: support |
| Panel material: forged carbon fiber | Setting the light through MOZA Pit House: Support |
| Pickle material: 3mm thick forged carbon fiber | Disassembly method: D1 reality racing quick release |
| Size: 12 inches (300mm) | Power supply mode: wireless |
| Magnetic picks: 2 | Signal transmission method: wireless |
| Double clutch paddles: 2 | Magnetic pickup induction method: photoelectric non-contact type |
| Mechanical keyboard texture buttons: 10 (can be illuminated, 9 colors adjustable) | Magnetic paddle mode: dual-clutch/single-clutch/switch |
| Front knobs: 5 | |
| Thumb knobs: 2 | |
| Universal joystick: 2 | |
| Highlight LED RGB lamp beads: 10 pcs | |

01 产品介绍

- 意大利进口Alcantara
- 300mm标准GT盘尺寸
- 锻造碳纤维骨架和拨片
- 光电磁吸双离合拨片
- RGB流水换挡指示灯
- 可编程发光按键(9种颜色)和旋钮
- D1赛用级快拆
- 无线供电和通讯技术

02 快拆使用方法



- 将方向盘快拆母头上6颗钢珠的位置与底座快拆公头的6个凹槽对应
- 将快拆往盘面方向按压
- 快拆将自动归位锁紧,若无归位,可尝试轻微转动盘面或取下后再安装
- 如需拆取盘面,用双手捏住金色部分,同时并拔出盘面

03 方向盘配置

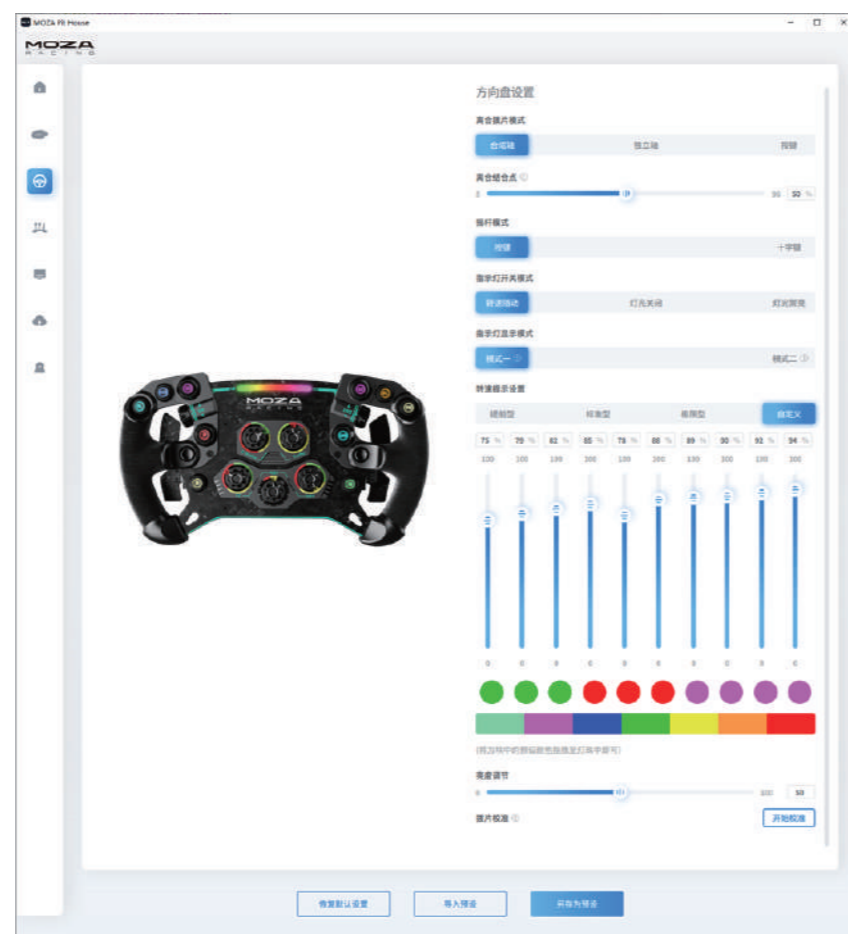
在MOZA Pit House软件中可以方便快捷地对GS方向盘进行设置。

- 离合器拨片模式:离合器工作模式设置,分为合成轴,独立轴和按键。
- 离合结合点:调节在合成轴模式下的双离合离合器结合点,默认为50%,设置范围为5%~95%
- 摇杆模式:设置摇杆操作模式,可设置为按键和十字键
- 指示灯开关模式:指示灯状态调节,分为随速转动,关闭和常亮
- 指示灯显示模式:共分为模式一和模式二,当鼠标移动到选项上时会弹出详细解释
- 转速提示设置:根据转速与换挡指示灯亮起的时机关系,分为提前型,标准型,极限型和自定义模式
- 亮度调节:调节换挡指示灯的亮度
- 指示灯颜色调节:将喜欢的色块拖动到指示灯上即可更换颜色
- 拨片校准:当拨片感应异常时,通过点击此处进行拨片校准

通过快拆键进入调试模式,可以设置发光按键的颜色,具体操作如下:

同时按住左右两侧的拇指旋钮(BB和ERS),直至换挡指示灯爆闪,此时进入按键设置模式,每按压按键一次,可更换一种颜色,共有9种颜色可变。

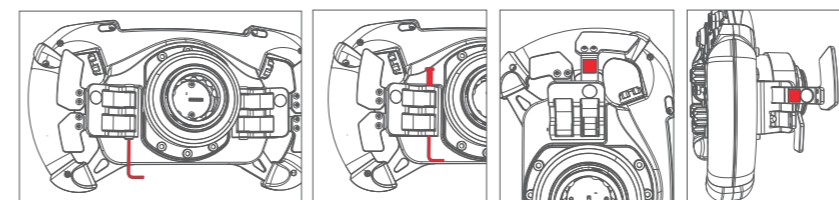
右手按压住右侧双离合拨片,同时左右拨动左侧方向摇杆,可快捷切换显示屏UI界



(详细方向盘设置与功能,请访问MOZA Racing官网)

04 磁吸拨片静音垫的安装

将方向盘放置于平面上使盘面朝下,使用六角扳手取下换挡拨片触发杆一侧的螺丝,再用扳手从磁吸拨片侧顶开插销(无需完全顶出,仅使磁吸拨片触发杆与插销可以分离即可),然后将静音垫贴在磁铁孔背面和拨片触发杆背面凸起位置,如图所示,最后将插销归位并装回螺丝



05 按键与旋钮英文缩写含义对照表

- | | |
|-----------------------|------------------------|
| FL: 自动闪灯 | WIP: 雨刮器 |
| BOX: 进站指令 | R: 倒档 |
| S1: 自定义按钮1 | N: 空挡 |
| S2: 自定义按钮2 | E-Brake: 引擎制动调节 |
| PL: 激活/解除维修区限速 | Turbo: 涡轮增压力调节 |
| TR: 车队通讯 | TC: 牵引力控制调节 |
| BB: 刹车比调节 | ABS: 防抱死控制调节 |
| ERS: 能量回收调节 | DIFF: 差速器调节 |
| P: 驻车档 | |

06 包装清单

- GT方向盘
- 工具包:六角螺丝刀/静音垫x4
- 便携布袋

07 产品参数

- | | |
|------------------------|-------------------------|
| 环身包覆材质:意大利进口Alcantara | 万向摇杆:2个 |
| 骨架材质:锻造碳纤维 | 高亮LED RGB灯珠:10颗 |
| 面板材质:锻造碳纤维 | LED色彩:7色自定义 |
| 拨片材质:3mm厚锻造碳纤维 | 智能漏测:支持 |
| 尺寸:12英寸(300mm) | 通过MOZA Pit House设置灯光:支持 |
| 磁吸拨片:2个 | 拆装方式:D1现实赛车快拆 |
| 双离合拨片:2个 | 供电方式:无线 |
| 机械键盘质感按键:10个(可发光,9色可调) | 信号传输方式:无线 |
| 正面旋钮:5个 | 磁吸拨片感应方式:光电无接触式 |
| 拇指旋钮:2个 | 磁吸拨片模式:双离合式/单离合式/开关式 |

背面

产品保修卡

产品型号	购买日期
用户姓名	用户电话
产品条码	通讯地址

经销商信息(签章)

产品保修条例

保修期

自购机日起,底座主体,方向盘,踏板和仪表显示屏保修12个月。设备外壳、说明书、线材、螺丝、扳手、包装等不在"一年免费保修服务"范围内,但您可以选择有偿服务。

购买者在以下条件下不享受免费保修服务,但您可以选择有偿服务。

- 超过三包有效期的;
- 无三包凭证及有效发票的,但能够证明该产品在三包有效期内的除外;
- 包修凭证上的型号与修理产品型号不符或者涂改的;
- 非本公司特约维修人员拆动造成损坏的;
- 因不可抗拒力造成损坏的;
- 未按产品使用说明要求使用、维护、保养而造成损坏的。

保修期限鉴于产品部位、不同国家法律法规等差异,将有所不同。相关国家与区域的保修期限,请咨询MOZA官方或购买时联系的MOZA授权经销商。



尺寸:126*180mm

材质:128g铜版纸