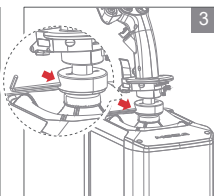
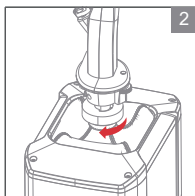
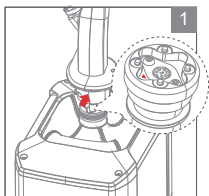


Connect to the Base

1. Connect the Z-Axis module to the base aviation connector in the direction indicated by the forward facing arrow (refer to diagram1).
2. Rotate the nut ring on the Z-Axis module clockwise to tighten (refer to diagram2).
3. Use the provided wrench to further tighten until the Z-Axis module is securely connected to the base (refer to diagram3).



Locking Mechanism

To disable the Z-axis function and use it only as an extension kit, locate the screw hole and tighten the screw clockwise with the supplied wrench until it locks.

